

Monopoles



valmont 
STRUCTURES

Why Choose Valmont ?

Wherever you go in the world, Valmont is within reach. By maintaining production facilities in many locations, we can better understand our customer's needs while also participating in local markets, thus offering fulfillment timelines unmatched by anyone in the industry. Wherever your project is in the world, Valmont is there ensuring that our customers have available "the best of all worlds."

No matter what your field conditions, your load requirements or design criteria, Valmont Structures has a solution. Our wide breadth of product allows you to choose the best match for your application, whether a custom designed tower or pre-engineered structure, solid rod or tubular construction.

Valmont has the knowledge, the expertise and the resources to provide the highest quality products and services in the industry, on time and at a competitive cost. We welcome the opportunity to discuss your next project.

Monopoles

Valmont Structures' steel poles are designed for cellular, PCS, Land mobile, microwave, broadcast, and other applications. These poles can be configured to support platforms and a variety of curved arms, straight arms and other antenna mounting hardware. Poles can be designed to accommodate multiple carriers and microwave antennas.

Structural analysis is performed to national codes such as TIA/EIA or UBC, or to local codes where specified. Steel design is per AISC specifications. Analysis and drafting are performed using our state-of-the-art pole analysis and CAD-CAM software.

Poles that support microwave antennas are designed using the allowable twist and sway limits as specified in the EIA standard. Special deflection requirements can also be met when specified by the customer.

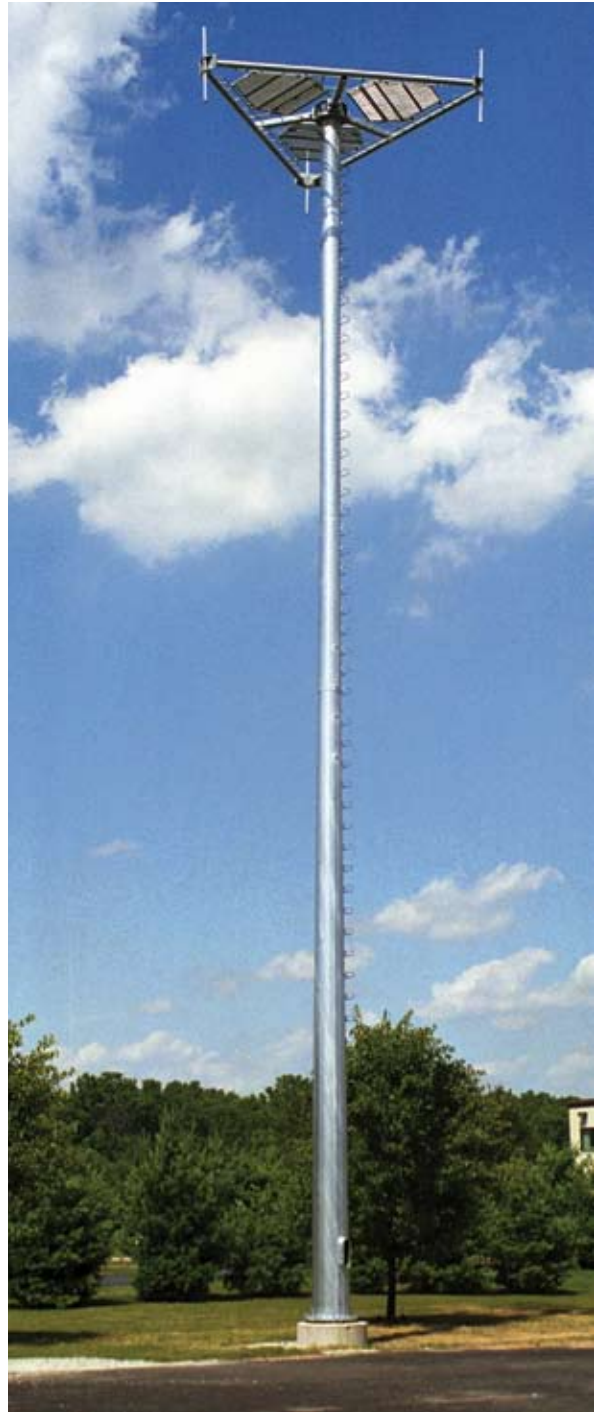
- 16-sided tapered pole-shaft cross-sections.
- Each shaft section is a constant-tapered hollow steel section up to 53 feet in length.
- Slip joints are designed with a minimum of 1-1/2 times pole diameter at the splice.
- Base plates are welded to the pole shaft using top and bottom circumferential welds, or using a full-penetration weld.
- Each bolt includes one leveling nut and one hold-down nut.



- Anchor bolts are provided loose with setting templates.
- Anchor bolt material is ASTM A615, GR.75 A Bearing Plate design is available if anchor bolt lengths are limited.
- Pole shafts are fabricated from low-alloy, high strength steels such as ASTM A572, GR. 65.
- All poles are hot-dip galvanized after fabrication per ASTM A-123.

- Add-on hand hole rims to route waveguide and coax inside of pole.
- Covered and uncovered coax support kits for routing of coax outside of pole.
- Add-on Step Bolts.
- No matter the mounting need, we have it covered - platforms, rotatable tri-brackets, curved and straight arm mounts.
- All steel hot-dipped galvanized, powder coat painting available.
- Lightning rods, minimum EIA grounding kits, and special grounding kits available to meet any lightning protection needs.
- Base plates are welded to the pole shaft using top and bottom circumferential welds, or using a full-penetration weld.





Every tower section and steel fabricated component is hot-dipped galvanized after fabrication for long-life protection against environmental corrosion damage.



Valmont Structures maintains an extensive supply and support network to provide you with the parts and accessories needed to complete any installation or co-location project.



Tower Specifications

Engineering:

Custom Designed -

- Tower designed to specific loading and site requirements.
- Custom foundation design included per site-specific customer furnished soils report.
- P.E. Sealed drawings provided for all 50 states.
- Equals or exceeds EIA codes.
- Designed to meet or exceed all local codes per customer specifications.

Pre-engineered -

- Pre-engineered maximum antenna load specified for each model.
- Tower stress analysis is available for submission for building permits.
- Foundation designs available per customer furnished soils report.

Steel:

- EIA grounding provided with tower.
- Hot-dipped galvanized to A.S.T.M. 123 specifications after fabrication.
- Painted modules are coated with water-based, environmentally safe material under controlled factory conditions.
- Standard hardware includes ASTM A-325 high-strength bolts, heavy-hex nuts, lock washers.

Welding:

- All towers are welded by A.S.M.E. Section 9 and A.W.S. D1-1 certified welders.
- CWB Certified to CSA Standard W47.1-92.

Delivery:

- Shipping charges calculated from nearest fabrication facility location.
- Expedited and crane-equipped truck delivery available.
- World-wide container shipment as required.

Names You Know
and Trust...



Valmont, PiRod, Microflect... for decades these names have been recognized as industry leaders in innovation, value and customer satisfaction. Today Valmont Structures continues to provide the best value in wireless structures with greater product choice than ever before.

The right product for every application. Valmont Structures offers a full line of self-supporting towers, guyed towers, monopoles, Minimum Visual Impact (MVI) products and passive repeaters to meet virtually every wireless need from lightweight communications to heavy commercial microwave installations.

Valmont companies have been supplying the broadcast, two-way, municipal, military, microwave, cellular, PCS, broadband, and specialty markets the world over. No other company is as trusted or experienced in delivering solutions for your wireless structures needs.



□ Wireless Communication
Structures Manufacturing

Global Manufacturing Locations

Valley, Nebraska, USA

Farmington, Minnesota, USA

Brehnam, Texas, USA

Monterrey, Mexico

St. Julie, Quebec, Canada

Gelsenkirchen, Germany

Charmeil, France

Plymouth, Indiana, USA

Elkhart, Indiana, USA

Salem, Oregon, USA

Rive-De-Gier, France

Chesterfield-Berbyshire, UK

Shanghai, China

Commerce City, Colorado, USA

Jasper, Tennessee, USA

Sidlic, Poland

Maarheeze, the Netherlands

Berrechid, Morocco



STRUCTURES

Valmont Industries, Inc.
1545 Pidco Drive
Plymouth, Indiana 46563-4005

Midwest
574.936.4221 ~ 877.467.4763
Northwest
503.589.6616 ~ 888.880-9191
www.valmont.com